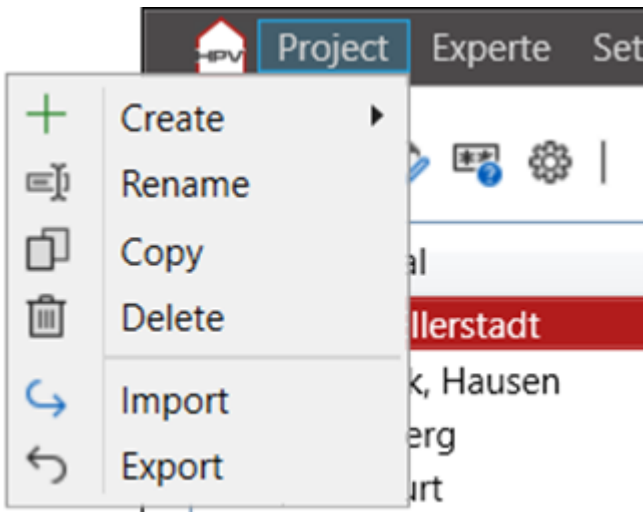
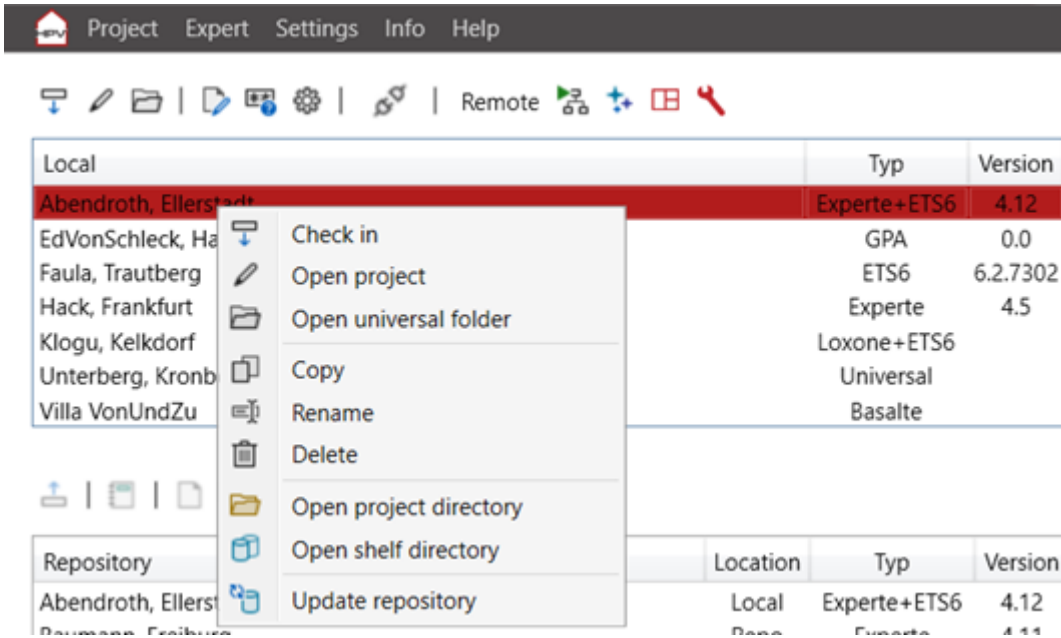


Projects Local

Operation is via the menu icons or the context menu of the project lists.



- "**Check in**" The project is moved to the central memory. See also "Repository mechanism".
- "**Open project**" Opens the project with the corresponding software. Also possible by double-clicking.
- „**Open universal folder**“ Each project has its own universal folder for storing any project-related data.
- "**Copy**" Copies the project and asks for a new name.
- "**Rename**" Assign a new name for the project. The project in the central memory is not changed.
- "**Delete**" Deletes the project from the project directory.
- "**Open project directory**" Opens the project directory. Only required for exceptions.

- **"Open shelf directory"** Opens the directory in which old project statuses are stored. Only required for exceptions.
 - **"Update repository"** The project is updated in the repository, but not checked in.
 - Further project type-specific points. See project types.
-

Revision #2

Created 2025-01-20 10:08:31 UTC by Unhye Lee

Updated 2025-01-20 18:36:38 UTC by Benjamin Schneider