

# TecTool Professional (en)

- [Introduction](#)
- [Basic and Plus range of functions](#)
- [Installation and setup](#)
  - [Setup and requirements](#)
  - [Automatic program start at Windows startup](#)
  - [Set up Windows write protection](#)
  - [Settings in detail](#)
- [IP telegram description](#)
  - [TecControl](#)
  - [TecMessage](#)
  - [TecStick](#)
  - [Gira HomeServer logic module](#)
- [VisuStarter](#)
  - [Gira QuadClient](#)
  - [Gira X1](#)
  - [Web client](#)
- [Busylight and caller info for Auerswald IP telephones via URL call](#)
- [Licensing](#)
  - [Cloud license "C"](#)
  - [USB dongle "D"](#)

- Manufacturer "H"
  - Outdated license methods
- Troubleshooting
- Exclusion of liability

# Introduction

The TecTool serves as a multifunctional tool for touch panels or PCs in intelligent buildings or environments. In addition to directly operable functions via its interface, there are many other functions that are executed via IP telegrams (**UDP/TCP**). It is also possible to execute functions via **URL call**, whereby the TecTool can be controlled by various systems such as Gira Homeserver, Hager Domovea, Loxone, etc.

Ready-made logic modules for **Gira** HomeServer can be downloaded free of charge at [www.SmartHomeTools.de](http://www.SmartHomeTools.de).

TecTool Professional

Touch panel + PC integration

General

Range of functions

Basic/Free

Edition

Surface

IP address

192.168.0.231

Port

49998

Update

Check now

System start

1/10/2025 7:58:33 AM

Autostart

?

On

No telegram received yet

TecControl

Auto Reboot

?

Off

Device monitoring

?

No

Multi-touch gestures

?

On

Windows button

?

On

Write protection UWF

?

Off

Screen control

?

Adjustment

Display brightness

?

Volume

?

Remote-Software

?

None

TecMessage

Design

TecTool

Slogan:

powered by SmartHomeTools

SmartHomeTools.de

\*second line for Visu start screen

VisuStarter

QuadClient

?

Start

Server IP

10.19.50.10

Configuration

?

Open

Kiosk / Autostart

?

Off

SMARTHOMETOOLS.DE

The TecTool covers three topics:

## TecControl

Execute or receive commands at Windows level.



## TecMessage

Create message windows in your own design as required and independently of visualizations.



## TecStick

The universal RGB USB indicator light (outlet).



# Basic and Plus range of functions

The TecTool with its basic functions is **FREE OF CHARGE** and may be used for any purpose, even commercially.

After installation, the TecTool has its **basic scope**. This can be extended by purchasing a "**Plus**" license. The exact scope can be found in the following table.

## TecControl

Functions	Basic	Plus
Receive IP commands via UDP/TCP/HTTP	X	X
Using the Gira HomeServer logic modules	X	X
Set Windows Auto Reboot via TecTool	X	X
Restart/shutdown via IP telegram	X	X
Display on/off via IP telegram	X	X
Device monitoring	-	X
Control program window	-	X
Disable Windows gestures	- PEAKnx Panels X	X
Disable Windows key	- PEAKnx Panels X	X
Control Windows write protection UWF	- PEAKnx Panels X	X
Executing programs via IP	-	X
Show on-screen keyboard	-	X
Play sounds .wav via IP	X	X
Play sounds .mp3 via IP	-	X
Start/stop sounds as a continuous loop	-	X
TextToSpeech Let texts speak	-	X
Set volume	-	X
Set screen brightness	-	X
Control and monitor AnyDesk & TeamViewer	-	X
VisuStarter Gira QC, X1, Web	Restricted Without kiosk mode	X

Read out battery information	-	X
------------------------------	---	---

**TecMessage**

Functions	Basic	Plus
Show popup messages	X	X
Long texts in popups	-	X
Manual line break through * in popups	-	X
Ad-free title text of the popups	-	X Individual text possible
Set the colors of the popups as desired	-	X

**TecStick**

Functions	Basic	Plus
Free color control when connecting a TecStick	X TecStick activates all Plus features	X
Free color control when connecting a blinkstick	-	X

# Installation and setup

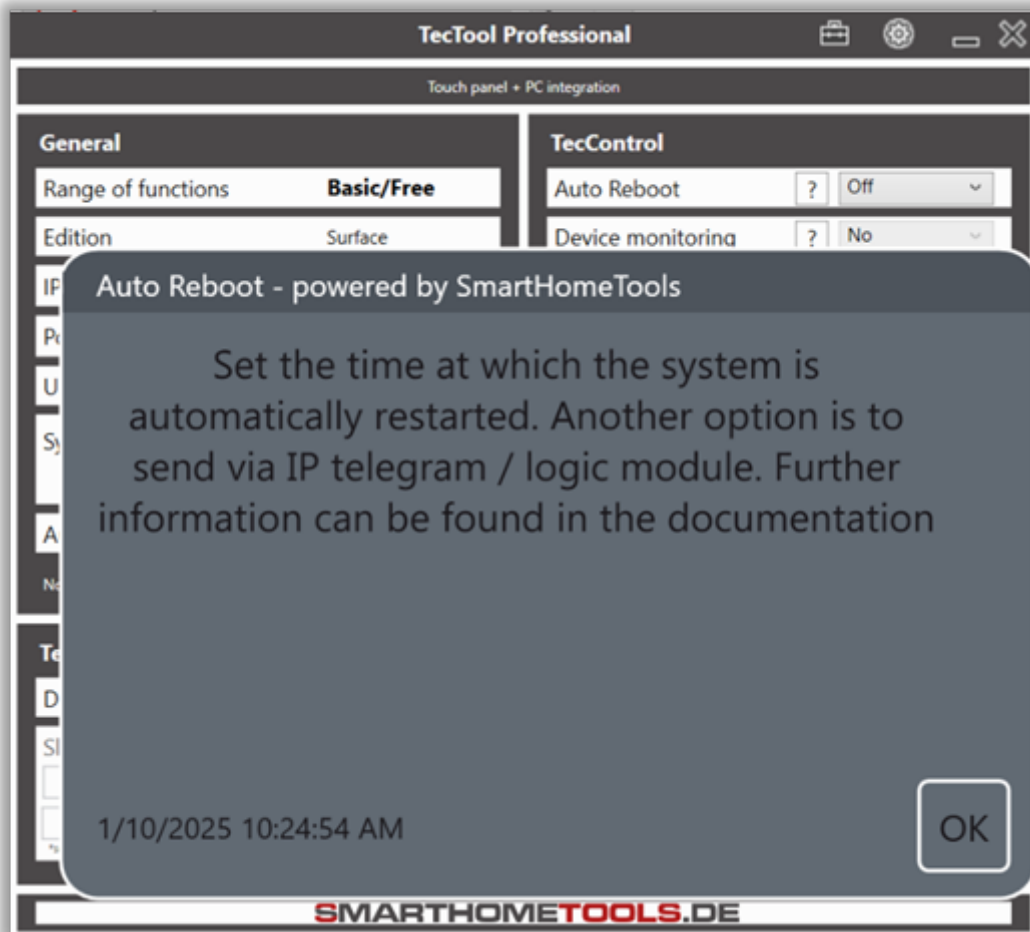
# Setup and requirements

The TecTool does not require an installer or setup. It can simply be unpacked and started.

1. Unzip TecTool.zip and copy it under "Documents/TecTool". **Do NOT** copy this to one of the Windows programs folders!
2. If available, connect the dongle or activation stick.
3. Start "TecTool.exe". If a TecStick is connected, it flashes for the self-test.
4. The program starts minimized and is now located in the system tray next to the time display. Please click on the right mouse button to make it visible.
5. Now adjust all settings as required, as described below, and then click on "Save". The TecTool minimizes automatically and is ready for use.

In some fields you will find a "?" button. This shows you some information about the respective function.



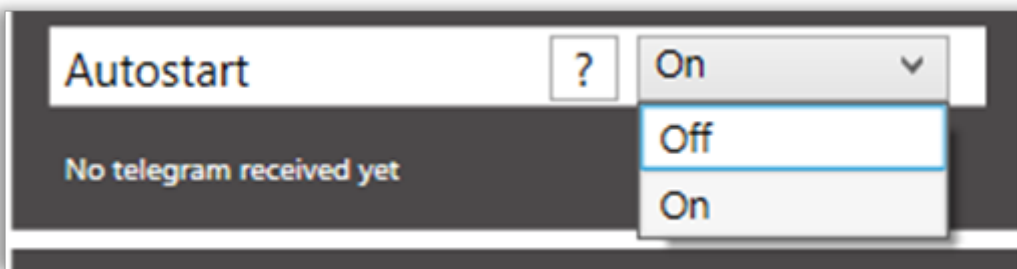


**System requirements:** Windows 7 or higher, .NET 4.8, network, approx. 10 MB disk space.

**Recommended** or optimized for Windows 10. For old Windows versions, e.g. XP, an old version with the former range of functions is available for download.

# Automatic program start at Windows startup

In order for the TecTool to function fully on the system, it is necessary for it to be loaded automatically when the system is started. You will receive a corresponding message when you start the program for the first time. If necessary, you can deactivate this later via the program interface.



# Set up Windows write protection

Write protection allows you to lock the system and protect it against changes. When write protection is set up, the system resets itself to the saved state each time it is restarted.

This protects against unintentional changes, manipulation attempts and problems with updates and is ideal in combination with an automatic restart.

This function is only available for Windows 10/11 Enterprise versions.

**The following settings are only recommended for experienced persons.**

**The instructions described here are not to the fullest extent and may require further research.**

**No liability is accepted for loss of data!**

To set up, please proceed as follows:

Start "Activate or deactivate Windows features". Use search.

Activate and install "Unified write filter" under "Lock mode for devices".

Start the command prompt as Admin and execute the following lines one after the other:

- a. "uwfmgr volume protect c:"
- b. "uwfmgr.exe file add-exclusion C:\<insert folder of the TecTool>"
- c. "uwfmgr.exe file add-exclusion C:\<insert documents folder>"
- d. "uwfmgr.exe registry add-exclusion HKLM\SYSTEM\CurrentControlSet\Control\Keyboard Layout"
- e. "uwfmgr.exe registry add-exclusion HKLM\SOFTWARE\Policies\Microsoft\Windows\EdgeUI"

Restart the system and test the functions.

# Settings in detail

General

Range of functions	PLUS - C
Edition	Surface
IP address	10.19.30.120
Port	49998
Update	Check now
System start	3/15/2024 8:01:25 AM
Autostart	? On

No telegram received yet

**Range of functions** shows whether a Plus license was found.

"C" - License obtained via cloud.

"D" - A dongle is connected.

"T" - A TecStick is connected.

"A" - Your system integrator has activated the Plus features.

**Edition** shows whether a specific device manufacturer has been recognized.

**IP address** shows the current address. If the system has been assigned several addresses, a maximum of one will be displayed here. Nevertheless, the TecTool works with all addresses.

**Port** sets the receiving port of the TecTool. If it is changed, a security prompt is displayed which automatically configures the firewall.

**Update** "Check now" performs a manual update search.

**System start** shows the last time the system was completely restarted.

**Autostart** - If activated, the TecTool starts automatically when Windows starts.

### TecControl

Auto Reboot	?	Off	▼
Device monitoring	?	No	▼
Multi-touch gestures	?	On	▼
Windows button	?	On	▼
Write protection UWF	?	Off	▼
Screen control	?	Adjustment	
Display brightness	?		
Volume	?		
Remote-Software	?	None	▼

Under **Auto Reboot**, you can set the desired time and frequency. There are 16 presets to choose from. For a free setting, use an IP telegram.

When **device monitoring** is active, the TecTool responds to an IP telegram request with a live message to your server. For more information, see the telegram description.

Deactivating the **multi-touch gestures** ensures a stable kiosk mode. -Requires admin rights-

Deactivates the **Windows button** system-wide. Helpful for panels such as PEAKnx, as it can be operated via the frame (Kiosk). -Requires admin rights-

**Write protection** is integrated on W10 Enterprise versions. See below for setup. -Requires admin rights-

The **screen control** has automatic device recognition and can be changed manually in the event of difficulties until the control works perfectly.

**Screen control** and **display brightness** can be operated directly via the user interface. If this function is not available for the system, the sliders cannot be moved.

To be able to monitor and control **remote-software** with the TecTool, set the installed software here.

In TecMessage **Design** you can set the standard colors of the popups if you do not transfer a definition via telegram.

The **slogan** appears in every popup. It can be edited or deleted with a plus scope.

The **second line** is displayed together with the first when using the Visu Starter on the start screen.

### TecMessage

Design	TecTool	▼
Slogan:		
<i>powered by SmartHomeTools</i>		
<i>SmartHomeTools.de</i>		
<small>*second line for Visu start screen</small>		

The **VisuStarter** can start various visualizations in kiosk mode. This prevents the user from breaking out of the visualization and accessing the operating system or other programs.

Further details in the separate chapter "VisuStarter".

If a **TecStick** or BlinkStick should not flash when TecTool is started, this can be switched off under "**Initialize at start**".

"**Test**" executes the initialization test.

# IP telegram description

# TecControl

TecControl turns your PC or touch panel into the actuator of your smart home.

Start any program automatically or via your visualization, play sounds and music, and much more.

You can send all commands via our free TecTool logic modules for Gira Home/FacilityServer. Download at: [www.SmarthomeTools.de](http://www.SmarthomeTools.de)

## Basic telegrams

"TecControl;Restart"	Performs a restart.
"TecControl;Shutdown"	Shuts down the relevant system.
"TecControl;Standby"	Sets the system to standby.
"TecControl;Hibernate"	Puts the system into standby mode.
"TecControl;DisplayOn"	Activates the display.
"TecControl;DisplayOff"	Switches the display off.
"TecControl;Sound;test.wav "	Plays a <b>.wav</b> file in the <b>Sounds</b> folder.

All commands from the **"Plus"** scope are listed below:

## Program control

"TecControl;Program;c:\program\text.exe"	Starts any program.
"TecControl;Program;c:\program\text.exe;/f/a"	Passes additional parameters.

## Sound control

"TecControl;Sound;test.mp3"	Controls an <b>.mp3</b> file in the <b>Sounds</b>
folder.	
"TecControl;Sound;test.mp3;Stop"	
"TecControl;Sound;test.wav ;Start"	Plays the sound as a continuous loop.
"TecControl;Sound;test.wav ;Stop"	Stops the continuous loop.



**"TecControl;Volume;80"**

Sets the Windows system volume.

## **Window control**

Control any windows/programs in Windows. The window name does not have to be entered in full. The first window that matches will be controlled accordingly. Therefore, the more exact the window name, the more reliable the control.

**"TecControl;window;fetch;<window title>"**

**"TecControl;window;minimize;<window title>"**

**"TecControl;window;maximize;<window title>"**

**"TecControl;window;normal;<window title>"**

**"TecControl;window;restore;<window title>"**

**"TecControl;window;close;<window title>"**

## **Further commands**

**"TecControl;Keyboard"**

Starts the on-screen keyboard.

**"TecControl;Ping"**

The TecTool immediately responds to this command with a UDP telegram "PingAntwort" to the sender IP address. The port corresponds to the set +1. "Device monitoring" must be activated in the TecTool. A corresponding template for the Gira HomeServer can be found in our download area.

**"TecControl;DisplayBrightness;100"**

Sets the brightness of the monitor. A value of 0-100 is possible.

**"TecControl;TTS;<text>;<voice>"**

Speaks the text specified in the "Text" placeholder. The voice installed in the system can be selected with "Voice". Default = 1.

**"TecControl;Design;<0/1>"**

Controls the background of the Visu Starter start screen between black and white when the Gira QuadClient visualization is set.

**TecControl;BatteryInfo "**

The TecTool responds to this command with:  
"AkkuAntwort;<Charge in %>;<remaining term in minutes>;<on the charger 1/0>" and can be used, for example, to extend the service life of a battery in touch panels/notebooks/tablets by controlling the charger via a switching actuator.

„TecControl;WindowsKeyOn“	Activates the window key.
„TecControl;WindowsKeyOff“	Deactivates the window key.
„TecControl;SwipeGesturesOn“	Activates the swipe gestures.
„TecControl;SwipeGesturesOff“	Deactivates the swipe gestures.
„TecControl;WriteProtectionOn“	Activates the write protection.
„TecControl;WriteProtectionOff“	Deactivates the write protection.

## Remote software commands

AnyDesk and TeamViewer are possible. In the following examples, AnyDesk can also be replaced by TeamViewer. The corresponding "RemoteSoftware" must be selected in the TecTool.

"AnyDesk;Query"	The TecTool responds to this command immediately with a UDP telegram "AnyDeskAntwort:<1 or 0>" to the sender IP address, depending on the status of the Windows service. The port corresponds to the set +1.
"AnyDesk;On"	Activates the Windows service of AnyDesk. The TecTool responds to this command immediately with a UDP telegram "AnyDeskAntwort:<1 or 0>" depending on the status of the Windows service as feedback to the sender IP address. The port corresponds to the set +1. The "RemoteSoftware" must be selected in the TecTool.
"AnyDesk;Off"	Deactivates the Windows service of AnyDesk and <b>prevents remote access</b> via the program. The TecTool responds to this command immediately with a UDP telegram "AnyDeskAntwort:<1 or 0>" depending on the status of the Windows service as feedback to the sender IP address. The port corresponds to the set +1. The "RemoteSoftware" must be selected in the TecTool.

# TecMessage

The telegram is structured as followed:

TecMessage;<Tt>;<Mt>

TecMessage;<Tt>;<Mt>;<Td>

TecMessage;<Tt>;<Mt>;<Tc><Ttc><Mc><Mtc>

**Standard  
Transfer design  
Design definition**

**<Tt>**

## **Title text**

The desired text in the title bar is transferred here, e.g. "Alarm".

**<Mt>**

## **Message text**

The message text is displayed in the main window of the pop-up.

**<Td>**

## **Temporary design**

If an individual message is to be displayed in a different design than the one set in the tool, this can be transferred at the end. The following values are currently available:

"TecS"	Design TecSupport
"GnSw"	Design Gira QuadClient - old design
"WsBl"	Design white/blue
"Alert"	Design red for e.g. alarms
"QCschwarz"	Design Gira QuadClient black - New design
"QCweiss "	Design Gira QuadClient white - New design

**<Tc>**

## **Title color**

Defines the background color of the title bar. The color is transferred as a HEX value.

**<Ttc>**

## **Title text color**

Defines the text color of the title bar. The color is transferred as a HEX value.

**<Mc>**

## **Message window color**

Defines the color of the text window. The color is transferred as a HEX value.

**<Mtc>**

## **Message window text color**

Defines the text color of the text window. The color is transferred as a HEX value.

**The display is activated with every TecMessage pop-up!**

## PLUS features

These include the display of very long texts by automatically displaying a **scroll bar** for overlong text, as well as complete **freedom from advertising** in all pop-up messages. In addition, **line breaks** can be inserted into the text by using an \* (asterisk).

## Examples

### Standard

#### Simple pop-up in the selected design

*"TecMessage;Note;Motion detected in yard"*

### Transfer design

#### Alarm popup with transferred design

*"TecMessage;Attention;Burglar alarm front door;Alert"*

### Design definition

#### Popup with free design

*"TecMessage;Weather warning;It's below 3 degrees Celsius this morning;#000088;#000000;#0088FF;#000000"*

### TecMessage PLUS

#### Ad-free, line break, long text

*"TecMessage;Advanced functions;A \*new line\* is created here. You can also write text of any length, e.g. instructions, in a message."*

Example - powered by SmartHomeTools

With the "TecMessage" feature of our TecTool, you can display any amount of text in a popup.

If required, you can insert a new line

at any point or use the PLUS extension to write as much text as you like until a scrollbar is displayed. Perfect for explanations...

3/15/2024 11:19:52 AM

OK

You can find colors as HEX values here: [https://en.wikipedia.org/wiki/Web\\_colors](https://en.wikipedia.org/wiki/Web_colors).

# TecStick

**TecStick;<MODUS>;<BYTE-R>;<BYTE-G>;<BYTE-B>;<OPTION>**

-

## **<MODUS>**

The mode defines the type of color display.  
Four types are currently available:

<b>LEDAus</b>	The stick is switched off.
<b>LEDLeuchten</b>	Permanently lit
<b>LEDBlinken</b>	Flashing
<b>LEDPulsieren</b>	Alternative flashing through soft dimming.

## **<BYTE-R>;<BYTE-G>;<BYTE-B>**

These three 1-byte positions define the desired color and are NOT transferred with the "LEDAus" mode.

## **<OPTION>**

This last digit can be used to change the flashing speed in "LEDBlinken" mode. If the value is not transferred, 500ms is set. The possible setting range is between 50 and 1500ms.

-

## **Examples**

<b>TecStick;LEDAus</b>	LED Off.
<b>TecStick;LEDLeuchten;255;255;255</b>	LED lights up in bright white.
<b>TecStick;LEDBlinken;127;0;0</b>	LED flashing in red with 50% brightness.
<b>TecStick;LEDBlinken;74;4;123;50</b>	Very fast flashing in purple.
<b>TecStick;LEDPulsieren;123;4;74</b>	Pulsing in pink .

## **Compatible Blinksticks**

Nano, Square and Strip.

IP telegram description

# Gira HomeServer logic module

The logic modules are very easy to use. TecControl has a basic module that is connected to the function modules. Some of these, such as sound, program and window, can be connected multiple times.

SmartHomeTools.de 010			
TecTool/TecControl Basis (v3.3 - www.TecSupport.de)			
192.1...	E01 IP Adresse/Hostname	A01 Debug	...
49998	E02 Port		
...	E03 Direktbefehl		
0	E04 Neustart	A02 Erweiterungen E01	0
0	E05 Herunterfahren		
0	E06 Monitor ein/aus		
0	E07 TecTool Überwachung ein/aus	A03 Status TecTool Online	0
60	E08 Zyklus in Sekunden	A04 Status TecTool Offline	0
0	E09 Tastatur einblenden		
0	E10 QC Design		
0	E11 Display Helligkeit		
0	E12 Systemlautstärke		

SmartHomeTools.de 010			
TecTool/TecControl Sound (v3.2 - www.TecSupport.de)			
0	E01 Eingang von Basis A02	A01 Debug	...
...	E02 Reserve		
test...	E03 Sound Datei		
0	E04 Sound einmalig		
0	E05 Sound Dauerhaft		

SmartHomeTools.de 010			
TecTool/TecControl Fenster (v3.2 - www.TecSupport.de)			
0	E01 Eingang von Basis A02	A01 Debug	...
...	E02 Reserve		
TecTo...	E03 Fenstername		
0	E04 Fenster mini-/maximieren		
0	E05 Fenster normal/wiederherstellen		
0	E06 Fenster holen		

SmartHomeTools.de 010			
TecTool/TecControl Programm (v3.2 - www.TecSupport.de)			
0	E01 Eingang von Basis A02	A01 Debug	...
...	E02 Reserve		
c:\wi...	E03 Programm Pfad		
...	E04 Programm Parameter		
0	E05 Programm starten		

SmartHomeTools.de 010			
TecTool/TecControl Anydesk (v3.2 - www.TecSupport.de)			
0	E01 Eingang von Basis A02	A01 Debug	...
...	E02 Reserve	A02 Fehler	0
1	E03 Überwachung ein/aus	A03 Zustand Überwachung	0
30	E04 Zyklus in Sekunden	A04 Zustand AnyDesk	0
1	E05 AnyDesk ein/aus		

SmartHomeTools.de 010			
TecTool/TecControl TeamViewer (v3.2 - www.TecSupport.de)			
0	E01 Eingang von Basis A02	A01 Debug	...
...	E02 Reserve	A02 Fehler	0
1	E03 Überwachung ein/aus	A03 Zustand Überwachung	0
30	E04 Zyklus in Sekunden	A04 Zustand TeamViewer	0
1	E05 TeamViewer ein/aus		

SmartHomeTools.de 010			
TecTool/TecControl AkkuInfo (v3.2.4 - www.TecSupport.de)			
0	E01 Eingang von Basis A02	A01 Debug	...
...	E02 Reserve	A02 Fehler bei Abfrage	0
1	E03 Abfrage ein/aus	A03 Akkustand Prozent	0
10	E04 Zyklus in Minuten	A04 Restlaufzeit Minuten	0
1	E05 Ladeautomatik	A05 Rückmeldung Laden aktiv	0
100	E06 Schwelle AUS	A06 Steuerung Ladegerät	1
30	E07 Schwelle EIN		

SmartHomeTools.de 010			
TecTool/TecControl TextToSpeech (v3.2.3 - www.TecSupport.de)			
0	E01 Eingang von Basis A02	A01 Debug	...
...	E02 Reserve		
0	E03 Start		
Hallo...	E04 Text		
80	E05 Lautstärke		
1	E06 Stimme		



# VisuStarter

The VisuStarter enables a so-called kiosk mode so that the operator cannot operate anything other than the set visualization. If the visualization is nevertheless terminated, it is automatically restarted. A kiosk screen is displayed at the start and when the user exits the visualization. You can customize the kiosk screen with your own slogan or company logo.

If you want to end the visualization yourself, it is recommended to open the Windows bar with remote software (AnyDesk/TeamViewer/RemoteDesktop) or via mouse/keyboard - press the Windows key - and end the starter via the TecTool. The "Start" button automatically changes to "Exit" during operation.

\*Kiosk full screen with your slogan.  
Adjustable via the "TecMessage slogan".

# Gira QuadClient

The QuadClient is fully integrated. This means that you do not need to install it additionally on the system. The TecTool automatically determines the version of the HomeServer and downloads the appropriate client.

NOTE - This means that multi-system operation, as is possible with the original QuadClient starter, cannot be realized. This fact was not taken into account during development, as it is very rarely required in practice.

To set up, please proceed as follows:

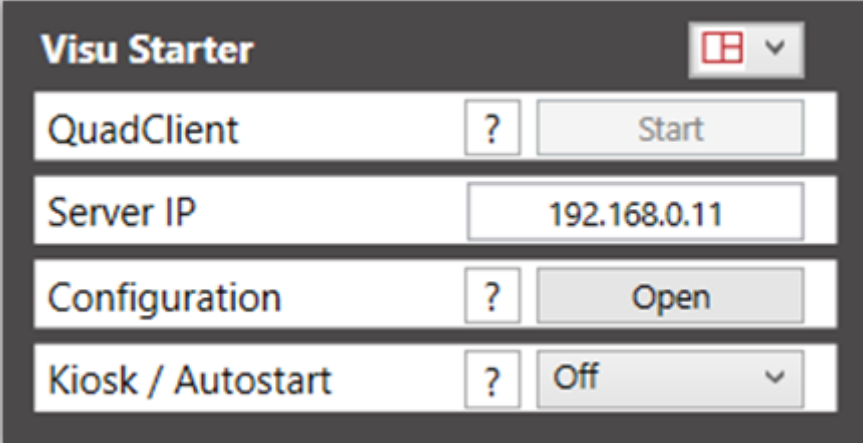
First enter the IP address of the HomeServer.

Then select "Open" configuration.

It may now take a moment for the client software to load.

After completion, the original QC setting opens automatically.

Once the settings have been saved and kiosk mode has been activated, the QuadClient can be started by clicking "Start".

The image shows a software window titled "Visu Starter" with a dark grey header bar. In the top right corner of the header is a red square icon with a white grid pattern and a small downward arrow. Below the header, there are four rows of configuration options, each with a label, a small square button with a question mark, and a larger button. The first row has the label "QuadClient", a question mark button, and a "Start" button. The second row has the label "Server IP", a text input field containing "192.168.0.11", and no button. The third row has the label "Configuration", a question mark button, and an "Open" button. The fourth row has the label "Kiosk / Autostart", a question mark button, and a dropdown menu showing "Off" with a downward arrow.

Visu Starter		
QuadClient	?	Start
Server IP	192.168.0.11	
Configuration	?	Open
Kiosk / Autostart	?	Off

# Gira X1

The X1 Windows client must be installed on the system.

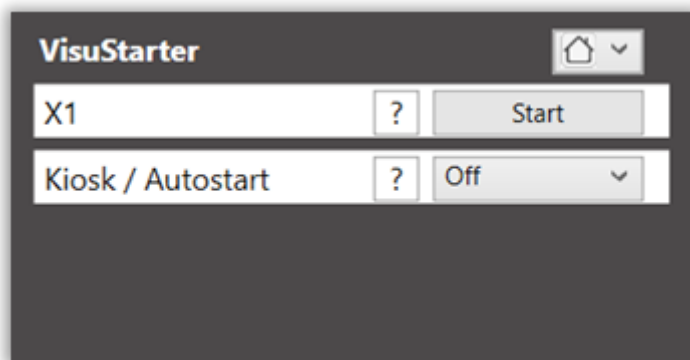
NOTE - The Windows window title bar will still be displayed, allowing the user to minimize, move or exit the client. However, the TecTool restores the full screen state so that it is not possible to exit.

To set up, please proceed as follows:

Install the Gira X1 Windows client "Gira Smart Home".

Then activate the kiosk mode.

Now click on "Start" to run the client and configure it.



# Web client

The Web Client Starter ensures the exclusive display of a website or web visualization in full screen. This prevents the user from breaking out and accessing the operating system.

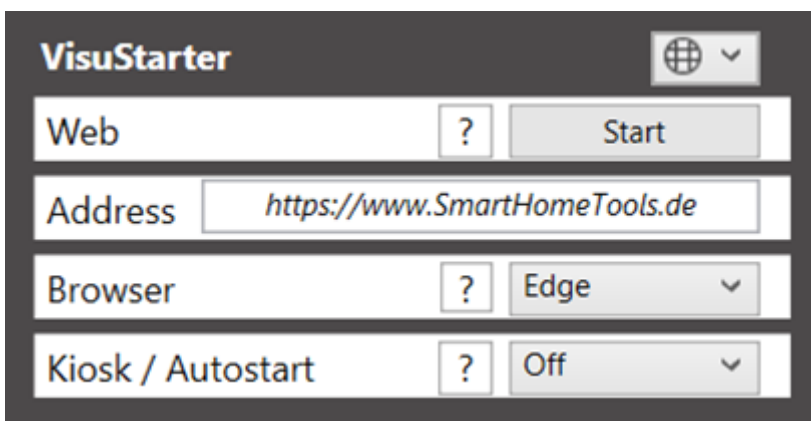
To set up, please proceed as follows:

Enter the desired address that the browser should start.

Select the browser to be used. This must be installed on the system.

Then activate the kiosk mode.

Now click "Start" to run the web client.



The image shows the VisuStarter Web Client configuration interface. It has a dark grey header with the 'VisuStarter' logo on the left and a globe icon with a dropdown arrow on the right. Below the header are four rows of configuration options, each with a label, a help icon (a question mark in a box), and a control element. The first row is labeled 'Web' and has a 'Start' button. The second row is labeled 'Address' and has a text input field containing 'https://www.SmartHomeTools.de'. The third row is labeled 'Browser' and has a dropdown menu showing 'Edge'. The fourth row is labeled 'Kiosk / Autostart' and has a dropdown menu showing 'Off'.

VisuStarter	
Web	<input type="button" value="Start"/>
Address	<input type="text" value="https://www.SmartHomeTools.de"/>
Browser	<input type="button" value="Edge"/>
Kiosk / Autostart	<input type="button" value="Off"/>

# Busylight and caller info for Auerswald IP telephones via URL call

In addition to the TCP and UDP IP telegrams, the TecTool also evaluates URL calls. To do this, simply precede the telegrams described above with the IP address of the Windows system and the port set in the tool.

"<http://192.168.111.110:49998/TecMessage;Note;Movement detected in the yard>"

To test the function, simply enter this address in any browser.

This interface enables the use of a TecStick as a Busylight on Auerswald IP system telephones 1600/2600/3600 with action URL function.

To do this, simply open the configuration interface of your system telephone and enter the following commands. Colors and modes can be freely varied. TecMessage and TecControl commands are also possible at this point.

Incoming call:

<http://192.168.111.110:49998/TecStick;LEDBlinken;255;255;255;51>

Establish connection:

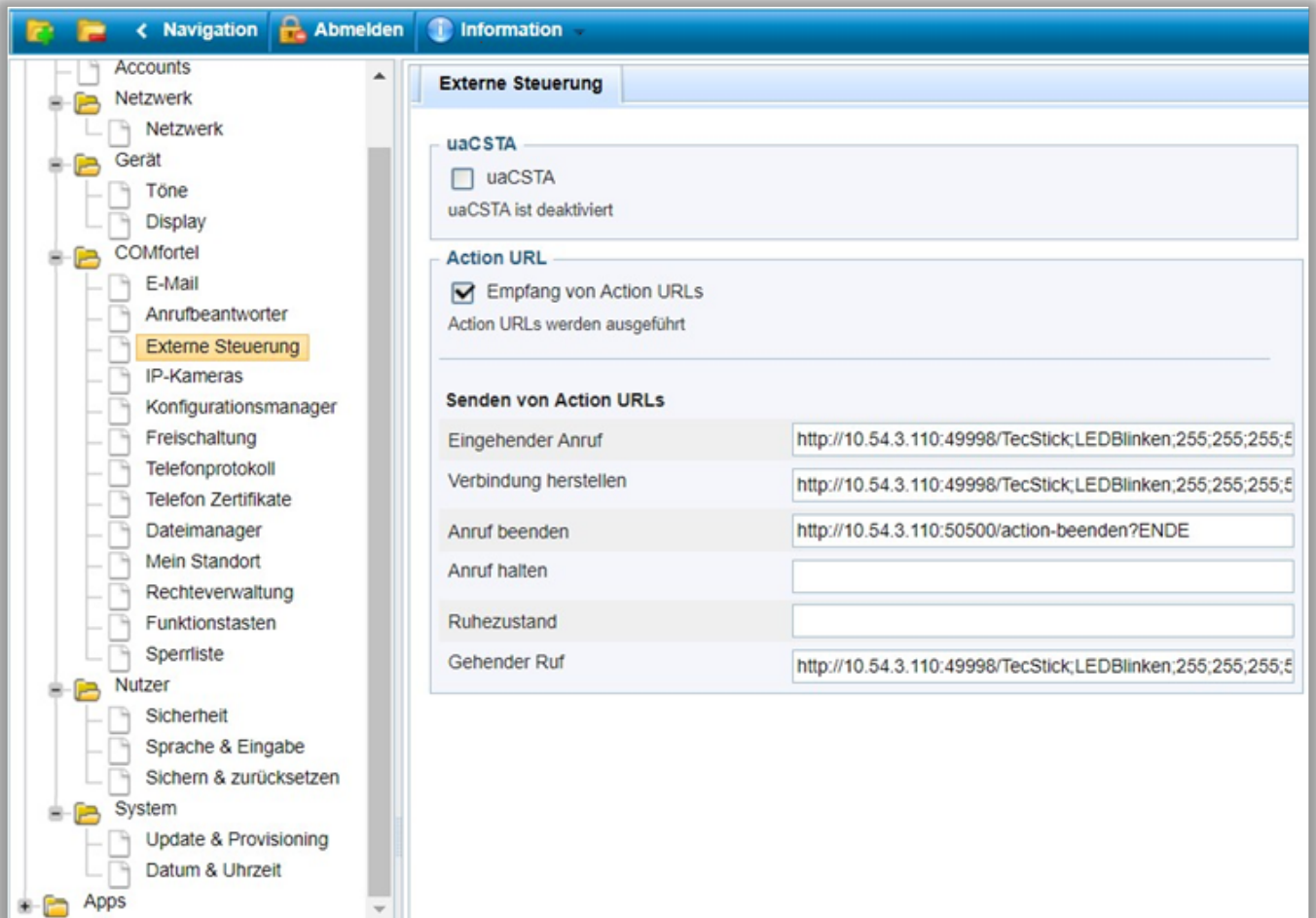
<http://192.168.111.110:49998/TecStick;LEDLeuchten;255;0;0?ENDE>

End call:

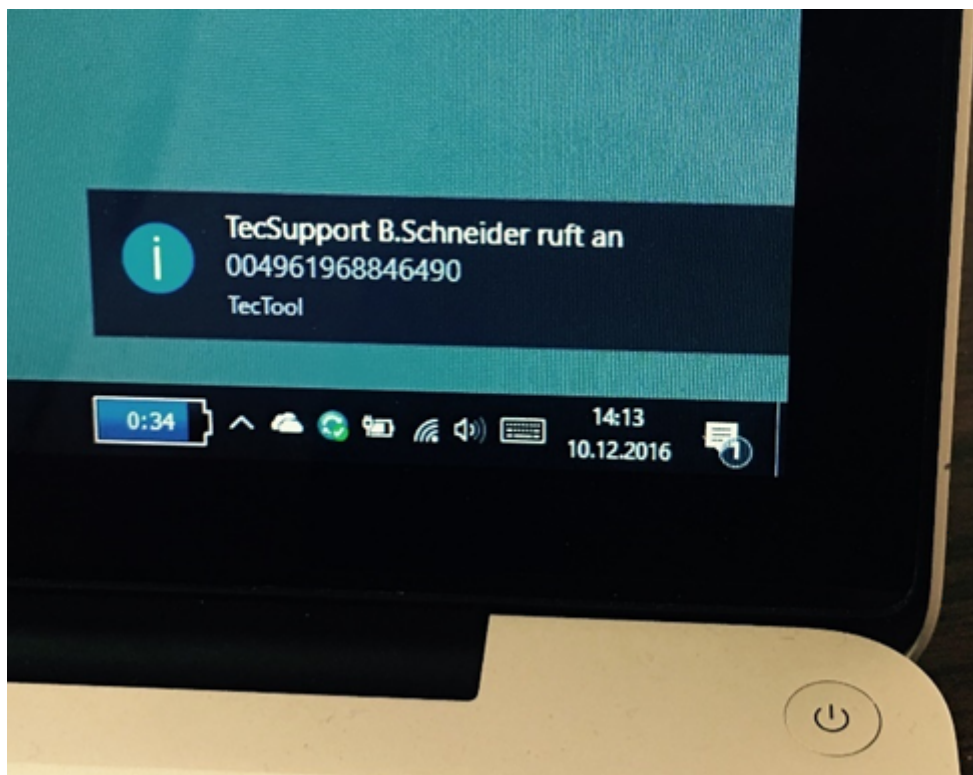
<http://192.168.111.110:49998/TecStick;LEDAus?ENDE>

Outgoing call:

<http://192.168.111.110:49998/TecStick;LEDPulsieren;0;255;50?ENDE>



In addition, the TecTool has been adapted to the Auerswald "Action URLs" and enables the caller's number to be displayed on the PC.



The phone automatically transmits the phone number and name to the TecTool with every URL action. We recommend that you only use this display for incoming calls. To prevent the transmission, it is important to end the URL entry with "?ENDE". This truncates all subsequent information.

# Licensing

Licenses for the full range of functions can be ordered at [www.SmartHomeTools.de](http://www.SmartHomeTools.de).

You can identify a valid license via the TecTool user interface in the "Range of functions" line. The final letter indicates the variant.



# Cloud license "C"

After the purchase you will receive access data to our license portal:

<https://cloud.SmartHomeTools.de>

In the "Licenses" menu item, you can check whether and which licenses are available for you. To transfer the license to a device, all you have to do is enter the assigned ID, which you can find under your name at the top left, into the software in the license query and follow the instructions. After an email confirmation, the process is complete. Internet access is required at least once for this process.

# USB dongle "D"

Another method is licensing via USB dongle, which remains permanently connected to the device. In the event of a device replacement or defect, this can simply be plugged into the new device and Internet access is not required at any time.



# Manufacturer "H"

Some touch panel manufacturers have the option of equipping their customer devices with a TecTool PLUS license. If this is the case, the "PLUS - H" identifier will be displayed in the "Range of functions" line in TecTool. An additional purchase is not necessary.

# Outdated license methods

**If you have one of the licenses listed below, we offer you a free upgrade to our license portal. In the foreseeable future, only licenses via license portal and USB dongle will be valid.**

**Please contact us for an update in our license portal via <https://helpdesk.SmartHometools.de>.**

## **Digital "A"**

If it was not possible to leave the USB stick permanently connected, individual licenses were transferred to the device via remote access (AnyDesk or Teamviewer).

Please contact us for an update in our license portal via <https://helpdesk.SmartHometools.de>.

## **SI activation stick "A"**

To make handling easier for system integrators, there was an activation stick that did not have to remain on the system. The TecTool was started once with the connected stick and thus licensed.

**This option was only available to system integrators/electrical companies.**

Please contact us for an update in our license portal via <https://helpdesk.SmartHometools.de>.

## **TecStick "T"**

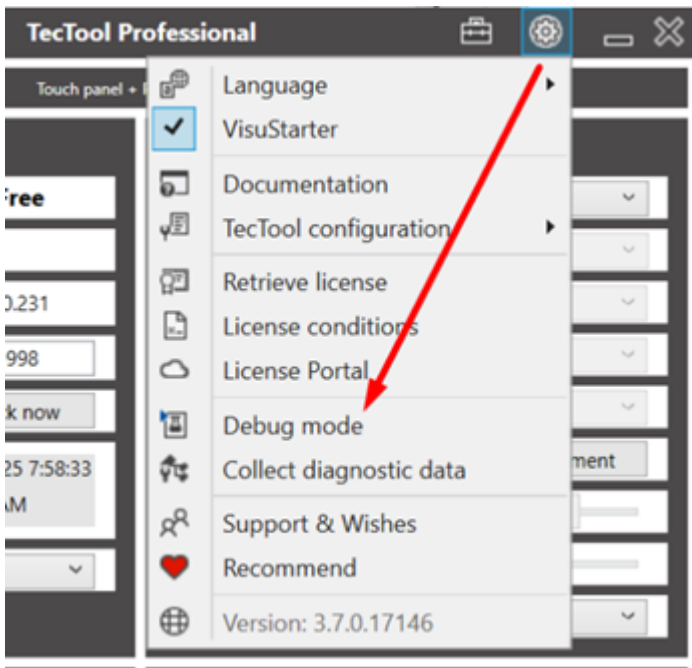
The TecStick LED or Blinkstick was equipped and distributed by us with a license.

Please contact us with the TecStick serial number for an update in our license portal via <https://helpdesk.SmartHometools.de>.

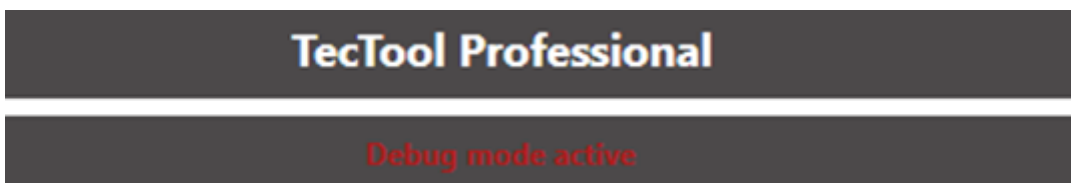
# Troubleshooting

If, unexpectedly, the TecTool does not work properly, please proceed as follows:

Activate debug mode in the settings menu and save the settings. The TecTool then starts in debug mode.



Check whether "DEBUG MODE ACTIVE" is displayed in the header.



The TecTool now records all actions and events.

Check the error, then click on "Collect diagnostic data" and send the file with an error description to our helpdesk at <https://helpdesk.SmartHomeTools.de>.

# Exclusion of liability

The TecTool with all its functions, especially the TecStick/Blinkstick, can be used for all conceivable functions. Please note that a stable and clean network is essential for reliable operation. We are not liable for consequential damage caused, for example, by a failure of the message display or malfunction of the "TecStick", "TecMessage" or "TecControl". Always implement important messages with caution and redundant notification variants.

Subject to change without notice.

Please check regularly at [www.SmarthomeTools.de](http://www.SmarthomeTools.de) to see if new versions are available or subscribe to our newsletter.

If you have any questions or problems, please do not hesitate to contact us at <https://helpdesk.SmarthomeTools.de>.